

A photograph of an elderly Black man with glasses and a pink shirt, smiling and leaning forward towards a young woman with blonde hair wearing a blue shirt. The woman is holding a blue pen and a notepad, appearing to be in a consultation or interview. They are sitting on a light-colored sofa in a bright, modern living room with large windows and indoor plants in the background.

Health, Care and Communities Commissioning Intentions 2025/26 Commissioning Transformation Workstream

Overview

Walsall is **ambitious** about securing **better outcomes** for residents, communities, partners, local businesses and staff.

This **document outlines** our **commissioning vision for Walsall** and describes our principles which will help us achieve our vision and ambitions.

Key leads across Walsall have been working together to design a **cross-cutting approach** to **commissioning** across **Walsall**.

Our **ambition** is for **commissioning** to align to best practice and to be more:



Aligned to **people** and **neighbourhoods**



Outcome-based, rather than activity-focused, improving quality and sustainability.



Focused on **standing in the shoes** of people who rely on support/care, or who may do in the future, to **understand what matters** to them.



Co-produced, working with other public sector and community partners/third sector organisations, operational colleagues, providers and residents.



Aligned to **joint commissioning opportunities** across the council and with partners.



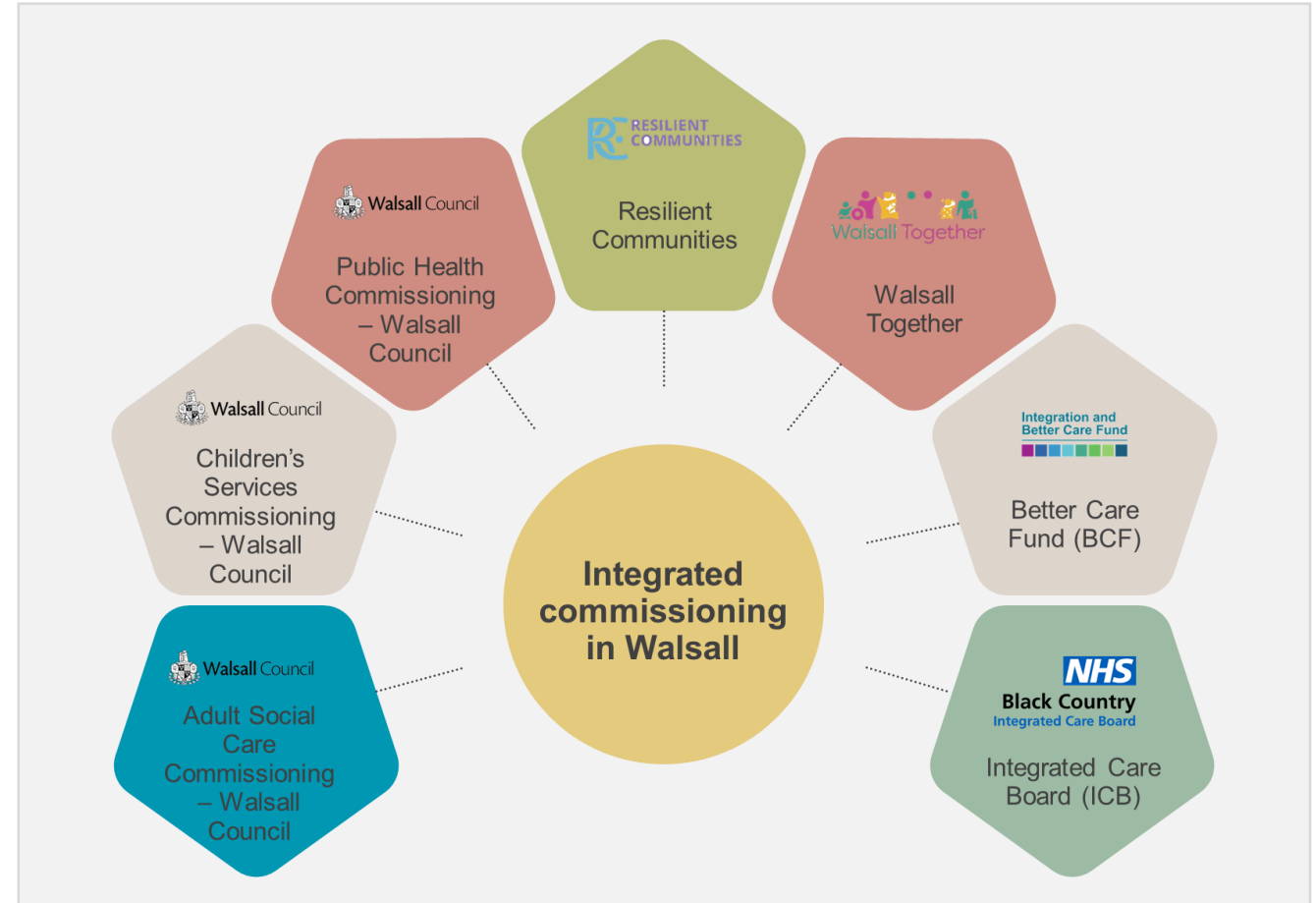
Proactive and **preventative**, identifying **root causes of demand** which **drive need** for services.

Integrated Commissioning in Walsall

The aim of **integrated commissioning in Walsall** is to bring together key services to **deliver seamless, person-centred care/support for all residents**. By aligning commissioning intentions across teams in the council and with our external partners, we aim to:

- **Improve outcomes** for individuals and communities by ensuring services are tailored to local needs.
- **Promote efficiency** through shared resources, data, and strategic planning.
- **Enhance partnership working** to break down silos and encourage joint decision-making.
- **Maximise impact** by pooling expertise, knowledge, and funding to address complex social and health challenges.

This document specifically outlines Walsall Council's commissioning intentions for 2025/26.



Integrated commissioning in Walsall visual

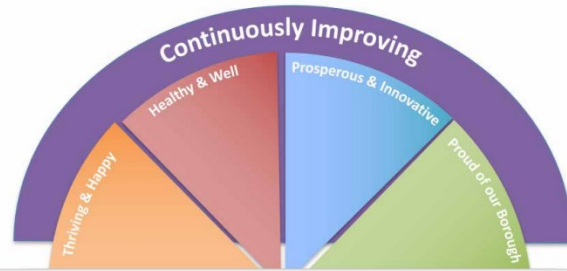
Walsall Council Aims and Vision

The Walsall Council Plan 2025-2029 outlines the borough's strategic vision and priorities, focusing on transformation, inclusivity, and community well-being to achieve long-term goals, including becoming the most improved borough by 2040. This sits in the context of the Wider We are Walsall 2040 partnership borough plan, and the refreshed Walsall Together Strategy 2025—2028. Walsall Together is our local place-based partnership, which brings together NHS, local authority, housing and Voluntary and Community Sector partners



Pursuing Excellence
Our Council Plan 2025-2029

Our Ambitions



Vision: to be a continuously improving council, delivering excellence, reducing inequalities and improving life chances for all.

Council Plan 2025-2029 vision

-  Focusing on Prevention
-  Ensuring Equity
-  Working in Partnership
-  Being Insight-led
-  Acting Sustainably

WE ARE
WALSALL
2040



Improve health and wellbeing outcomes

We will help people to manage their own health and wellbeing needs, prevent ill-health and reduce inequalities in health and wellbeing outcomes

Provide high-quality, accessible, coordinated and responsive care

We will integrate services in line with our model of health, care and wellbeing, ensuring services are supported through care navigation and shared digital care records

We will work collaboratively to

Support a motivated and happy workforce

We will invest in the development and skills of our workforce so they can provide the best possible care

Make best use of collective resources

We will use our resources from across the partnership in the best possible way and ensure the best use of every pound spent

Commissioning Vision and Principles

- Our goal is to understand **what people in our community need and work with** them to create services that improve their lives. We want to help everyone in Walsall stay healthy and happy. For all our residents, this means making sure they are **safe and feel like they belong**.
- We want to be **fair and include everyone**. We want the best services that we can get and a **skilled and caring workforce to support people in Walsall**.
- We will invest in services that use the talents of **local people**, demonstrate **value-for-money**, and **support a strong local economy**.



Shift in Commissioning Practice

Through **co-design and co-production**, colleagues in the adults, children's, resilient communities and Public Health commissioning teams have **established an approach to commissioning** that moves away from **traditional ways** of commissioning, to those which are **more collaborative, inclusive and outcome focused**.

Our commissioning principles

1. Designing together with residents, service providers, and stakeholders



2. Wellbeing, prevention and outcomes-focused



3. Focus on accessibility, safety and equity



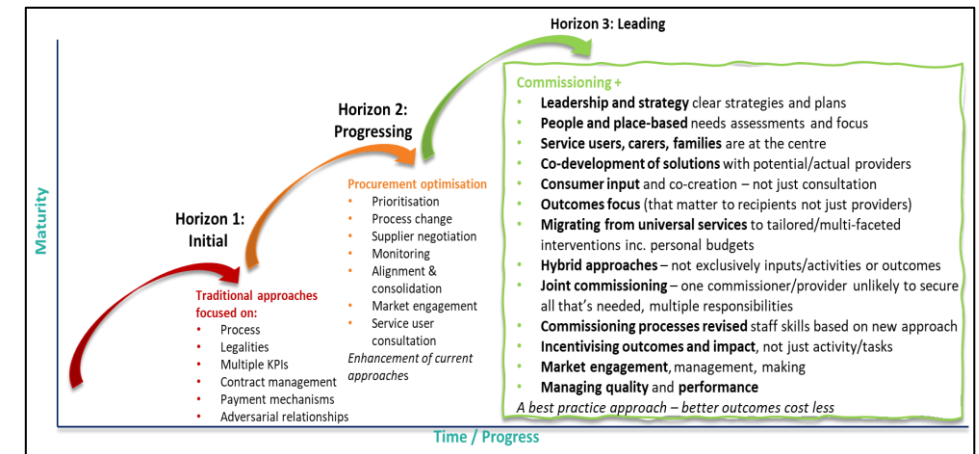
4. Maximising impact through innovation, joint working and use of technology



5. Investing and developing our workforce



6. Needs and evidence driven, achieving good quality, value and outcomes




Shift to Horizon 3 commissioning

Health, Care and Communities Commissioning – Areas of focus 2025/26

This slide highlights the key areas of focus for commissioning identified across council teams involved in integrated commissioning, focusing on shared priorities and collaborative efforts to improve outcomes for Walsall residents.


Right help, right time

- 
- **Prevention:** coordinated approach to addressing upstream factors to reduce need/demand.
 - **Coproduced** services: voice of our children, families, adults and communities, and ensuring truly individualised care
 - **Transitions:** Streamlined processes from services, and between primary, secondary, and community care settings for children.
 - **Placement/accommodation** strategies – increasing capacity and quality of local accommodation (adults/children/SEN)


Maximising local assets and market shaping

- 
- Review and development of **integrated service pathways** to improve seamless delivery of care to residents.
 - Improved focus, planning and engagement with providers around **market shaping** and **quality** of services.
 - Develop the Community and Voluntary sector offer, investing in the Walsall Pound, taking an **asset-based** approach to commissioning
 - **Workforce improvement** – e.g. development of academy

Digital Access & Innovation

- 
- Collaborative efforts to **improve digital access to services** for residents and families, especially in under-served groups.
 - Shared focus on **digital tools for care coordination**, service delivery, and enabling self-management of health, e.g. new regional provider portal for Children's services to enable better engagement with providers on the framework, developing Wellbeing directory.

Future - focussed

- 
- **Strategic planning and commissioning** engaging with providers
 - **Longer term/sustainable commissioning** – maximising new regulations
 - **Preparing and responding** pro-actively to the reform agendas
 - Alignment of **strategies to pool resources/expertise**, and collaborative commissioning across teams/organisations, including regionally
 - **Embed valuing care** to shape the market in meeting children's care needs locally

Commissioning Intentions 2025/26 on a page

Start and Live Well

*Council Plan: Child Friendly Borough
Prevention*



- Recommission health in pregnancy, health visiting, school nursing services and teenage pregnancy services
- Further develop and sustain Family hubs/best start in life offer and Child and Family Healthy Eating programme
- Support commissioning of Oral health improvement service
- Commissioning a youth offer including the Retender Young People's Health and Wellbeing service.

Support/care

- Build on Family Safeguarding and Families First for Children safeguarding programmes
- Review short break and respite service provision for children with SEND
- Develop joint commissioning arrangements with NHS partners linked to children with complex needs, and ensuring appropriate Special Educational Needs provision.

Live and Age Well

*Council Plan: Living active and healthy
lives, Supported and cared for*



Prevention

- Commission falls and frailty prevention service offer
- Recommission of Making Connections Walsall (social prescribing service) and the Wellbeing Mobile Unit

Support/Care

- Review of support provided to people with learning disability, mental health or Autism
- Continue development of Reablement service, enabling more people to live at home
- Develop Enablement support to increase independence for people with more complex needs
- Development of Integrated Care service model supporting hospital discharges
- New Support at Home pilot to look at home care and other community support

Communities and Transitions

*Council Plan: Resilient and Empowered
communities, Living active and healthy
Lives, Supported and cared for*



Prevention

- Commission and deliver against national tobacco and alcohol/drug grants and plan for recommissioning alcohol/drug service
- Sports England physical activity bid submission early 2026
- Ongoing roll out of Be Well Walsall adult weight management, stop smoking and community NHS health check services, and wider NHS health check recovery
- Redesign health protection (infectious diseases and outbreaks) function
- Renew locality CVS infrastructure contracts, and grants
- Review approach to Domestic abuse and Asylum seeker support commissioning
- Review support to carers including support for young carers becoming a adult carer.

Support/care

- Ensure effective support systems are in place for young people's transitions.