

Walsall Council Electric Vehicle Chargepoint Strategy

September 2024

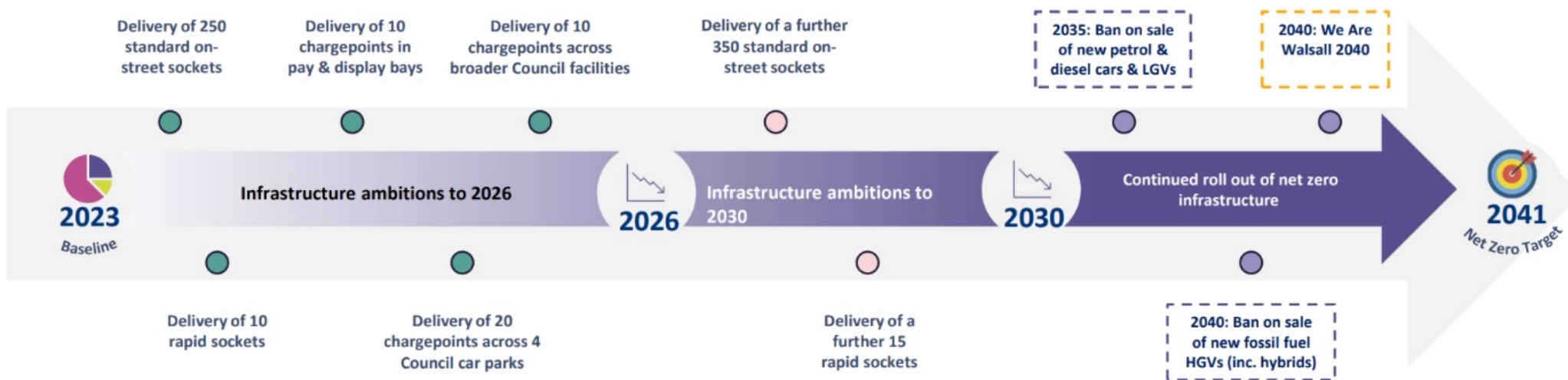


Walsall Council

Contents

Walsall Council's Electric Vehicle Strategy Timeline	3
Key Abbreviations	4
Chargepoint Definitions	4
Executive Summary	5
1. Key Principles	6
2. Current Situation	7
2.1 Policy & Strategy Landscape	7
2.2 Existing Chargepoint Locations & Types	7
3. Future Demand	8
4. Delivery	9
4.1 Council-Owned Land and Car Parks	9
4.2. Standard On-street Chargepoints	9
4.3 Council Car Parks and Facilities	9
4.4 Pay & Display Bays	9
4.5 Rapid Chargepoints	9
5. Action Plan	10

Walsall Council's Electric Vehicle Strategy Timeline



Key

- EV Strategy Actions (to 2026)
- EV Strategy Actions (to 2030)
- Policy Context
- UK Government Policy
- Walsall Council Policy

Key Abbreviations

Abbreviation	Definition
EV	Electric Vehicle
KRN	Key Route Network
LGV	Light Goods Vehicle
MRN	Major Road Network
SRN	Strategic Road Network
TfWM	Transport for West Midlands
ULEV	Ultra Low Emission Vehicle
WMCA	West Midlands Combined Authority

Chargepoint Definitions

Terminology		Charging Speed	Time to Full Charge
Standard	Slow	3.7kW	16 hours
	Standard	7.4kW	8 hours
	Fast	11 – 22kW	3-4 hours
Rapid	Rapid	43 – 50kW	1-2 hours
	Ultra-Rapid	50 – 350kW	30 mins or less

Executive Summary

Walsall Council aim to deliver public electric vehicle (EV) chargepoints across the Borough, working in partnership with Black Country Transport (BCT) and West Midlands Combined Authority (WMCA).

The Walsall EV Chargepoint Strategy sets out our ambition for the short term roll out of chargepoints up to 2026, while also looking ahead strategically to 2030. The focus of 2030 aims to provide public EV infrastructure ahead of the Government's commitment to phase out the sale of new cars and light goods vehicles (LGVs) by 2035.

Existing Provision

There are approximately 100 charging sockets available for public use at chargepoints across public and private property in the borough.

Future Need

Evidence forecasts the need for 1,134 standard and 153 rapid EV charging sockets at chargepoints by 2030 across the Borough.

Opportunities

We will continue to explore public and private sector funding options to ensure the Borough is well-positioned for the transition to EVs.

We have over 1,000 Council-owned car parking spaces across facilities to provide our residents and visitors with on-street and rapid charging facilities.

We have further opportunities to deliver chargepoints on Council-owned land.

Delivery

By 2026 we aim to deliver:

- 250 standard on-street EV charging sockets
- 10 rapid EV charging sockets
- 20 EV charging sockets across Council-owned car parks
- 10 chargepoints across broader Council facilities
- 10 EV charging sockets at Pay and Display bays

By 2030 we aim to deliver a further:

- 350 standard on-street charging sockets
- 15 rapid EV charging sockets

1. Key Principles

The Council has identified four core principles to ensure the EV Chargepoint Strategy aligns with our broader vision and goals:

Mode Shift

To support our decarbonisation goals Walsall Council is committed to supporting projects that reduce car journeys and encourage greater use of active and sustainable modes of travel.

Accessibility

To ensure an accessible approach to EV chargepoint roll out. This includes making sure infrastructure does not impede access or use of the footway to all.

Inclusion

To develop an approach to EV chargepoint roll out that is inclusive to all, regardless of income, ethnicity, gender etc. This includes supporting the equitable provision of EV infrastructure across the Borough.

Future Proofing

To consider new and emerging technology as EV and EV infrastructure technology continues to rapidly evolve, alongside the broader energy system landscape.





2. Current Situation

2.1 Policy & Strategy Landscape

At a national, sub-regional and local level we have a clear policy framework to work towards a net zero future. This includes an emphasis on accelerating the transition to EVs.

National

The government are providing a range of tools and funding to support local authorities to plan and deliver local public charging infrastructure.

Regional

The Council are already committed to support the delivery of the Black Country Ultra Low Emission Vehicle (ULEV) Strategy. We will continue to support and integrate with West Midlands Combined Authority (WMCA) on the forthcoming Infrastructure for Zero Emissions Vehicles Strategy.

Local

We have a target to be net zero by 2041 in line with the wider regional WMCA and We Are Walsall 2040.

Walsall Area Action Plan reflect a desire to improve the availability of sustainable transport options including EV charging.

2.2 Existing Chargepoint Locations & Types

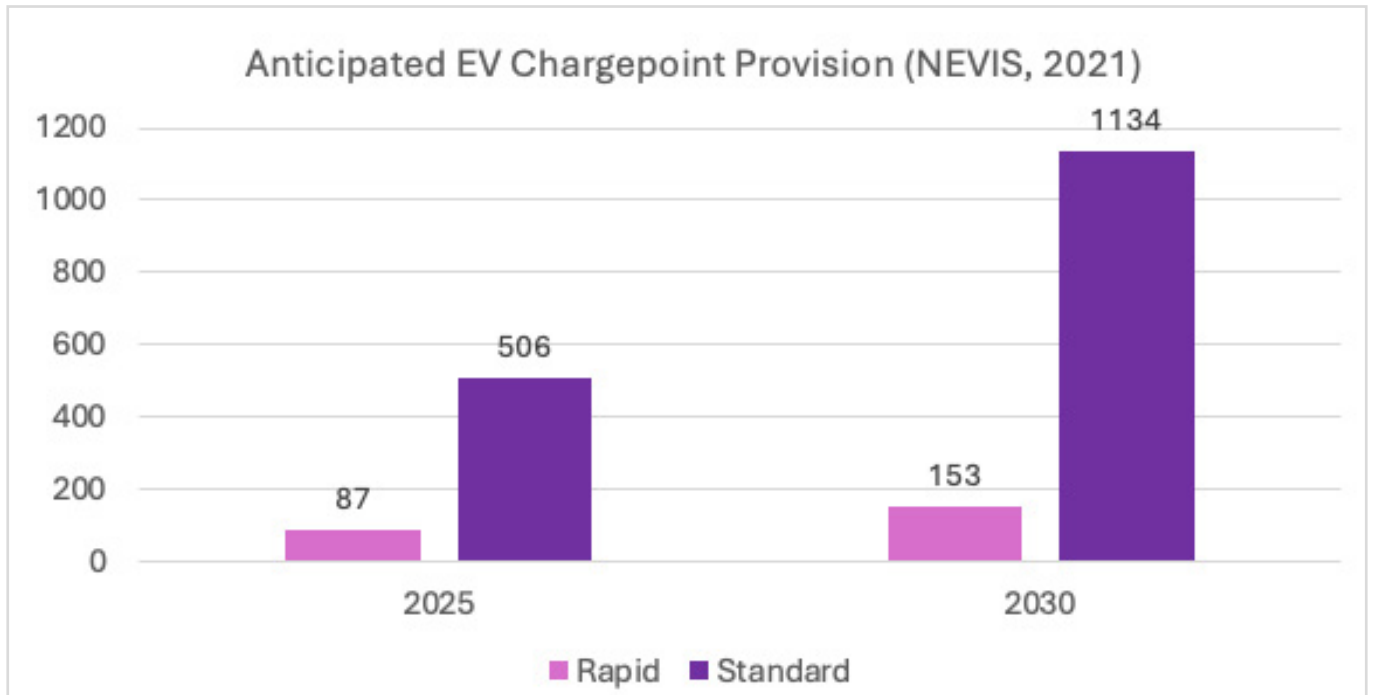
There are approximately 100 charging sockets available for public use at chargepoints in Walsall. The Borough's existing chargepoints are largely located in the car parks of hotels, shopping centres and large supermarkets. Walsall Council, in partnership with Black Country Transport, has started to roll out public EV charging sockets at chargepoints in residential areas to support households that do not have access to off-street parking.

3. Future Demand

By 2030 it is estimated Walsall will require 1,134 standard and 153 rapid EV charging sockets at chargepoints.

This forecast is based on the current vehicle fleet and EV sales predictions for the Borough up to 2030, using a set of scenario assumptions supported by government.

While the outputs may vary between this strategy and other regional forecasts, due to the selection of different scenario assumptions, they all indicate the need for a significant increase in the availability of charging infrastructure across the West Midlands.



Anticipated Chargepoint Need: The forecasts demonstrate a significant gap between existing and future EV charging infrastructure needs in Walsall. Rapid progress to deliver EV chargepoints is required to meet anticipated need and support our net zero goals.

4. Delivery

We have developed our EV Chargepoint Strategy in collaboration with key stakeholders to support local and sub-regional alignment of future targets and to respond to the needs of our residents, visitors, and businesses.

4.1 Council-Owned Land and Car Parks

Installation of standard and rapid EV chargepoints on our Council-owned land will support accelerated delivery. Where private sector EV chargepoint operators lack access to land, we can utilize existing assets to progress delivery without the need to purchase or lease land.

**Approximately
39% of Walsall's
residents in
Walsall do not
have access to
off-street parking**



(Based on the number of residents who live in flats/apartments, maisonettes and terraced houses in the Borough).

4.2. Standard On-street Chargepoints

By installing EV chargepoints on streets across our Borough, we aim to reduce the barriers to EV uptake and support access to charging for our residents, especially those without driveways and dedicated off-street parking.

4.3 Council Car Parks and Facilities

The Council own and manage 17 public car parks across the Borough including within the town centre and local centres such as Willenhall. There are more car parks across facilities including schools and leisure centres.

There are approximately 1,000 car parking bays across all Walsall Council car parks and facilities. To date, no Council-owned car parks have any EV charging facilities.

Whilst our parking bays clearly provide a significant opportunity for EV charging facilities, the Council will review any car park sites that require investment or may be repurposed in the future. Chargepoint delivery will be targeted at our long-term car park sites.



4.4 Pay & Display Bays

We own and operate approximately 225 pay and display parking bays across the Borough. Most of these bays are in Walsall Town Centre on central, visible streets, suitable for both standard and rapid chargepoints.

4.5 Rapid Chargepoints

There is a need to accelerate delivery of rapid EV chargepoints across the Borough to support local economic growth. This includes supporting our businesses such as taxis, fleet operators and longer distance drivers.

In the short-term the key focus for delivery will be on our streets. However, Walsall Council will also explore opportunities to support the delivery of rapid chargepoints on or near the Strategic and Major Road Networks (SRN & MRN) and the West Midlands Key Route Network (KRN).

Walsall Council are committed to ensuring that EV chargepoints are available across the Borough to provide access to all users. This includes those without access to off-street parking as well as people with disabilities, mobility impairments and the elderly.



5. Action Plan

Our commitment to accelerate the delivery of EV chargepoints across Walsall is outlined by the following actions up to 2030:

No.	Action	Rationale
1.	Continue to explore future funding options for delivery of chargepoints	While public funding secured to date will undoubtedly kickstart delivery of chargepoints, we commit to seeking further public and private funding opportunities with chargepoint operators.
2.	Promote the EV Chargepoint Suggestion Tool on Walsall Council's website.	To identify suitable sites for early roll out of EV chargepoints where our residents and businesses need them. Responding to demand should help accelerate the transition to EVs.
3.	Deliver 250 standard on-street EV charging sockets by 2026. Deliver 350 more standard on-street EV charging sockets by 2030.	Approximately 39% of Walsall residents do not have access to dedicated off-street parking. EV chargepoints on our streets will be essential to enable an equitable transition to EVs for all.
4.	Deliver 10 rapid EV charging sockets by 2026. Deliver 15 more rapid EV charging sockets by 2030.	Rapid EV charging is essential to fleet vehicles (e.g. taxis and private hire vehicles) and to long distance private drivers, which is pertinent given Walsall's proximity to the motorway network including the M6.
5.	Deliver 20 EV charging sockets across 4 car park sites by 2026.	We currently own and operate 17 car parks that would be suitable for both standard and rapid chargepoint installations. There is a need to Review our existing car parking to understand our long-term future park sites. These sites can then be assessed for chargepoint suitability.
6.	Deliver 10 EV charging sockets across the broader community facilities (e.g. leisure and community centres) by 2026.	Community facilities are generally located in the heart of communities and therefore provide convenient, central locations that can support an equitable and inclusive approach to chargepoint delivery.
7.	Deliver 10 EV charging sockets at Pay and Display bays across the Borough by 2026.	Walsall Council own and operate approximately 225 pay and display bays across Walsall. Most bays are in Walsall Town Centre. As central, visible locations they provide ideal sites for EV charging and for catering to the needs of all drivers.
8.	Work with a wide range of chargepoint operators and explore charging prices.	To support choice and reduce costs to drivers, we will consider working with a variety of chargepoint operators. This will assist to provide a variety of tariffs for users to choose from. It also allows Walsall Council to monitor both EV chargepoint reliability and revenue potential over time between operators.
9.	Commit to providing an equitable provision of chargepoints across the Borough.	We will actively work with chargepoint operators to provide an equitable provision of chargepoints across the Borough. The distribution of chargepoints will be continually monitored and evaluated to maintain this approach.
10.	Utilise the Office of Zero Emission Vehicles' accessibility specifications.	To support our accessibility principles and to design in access for all users.

