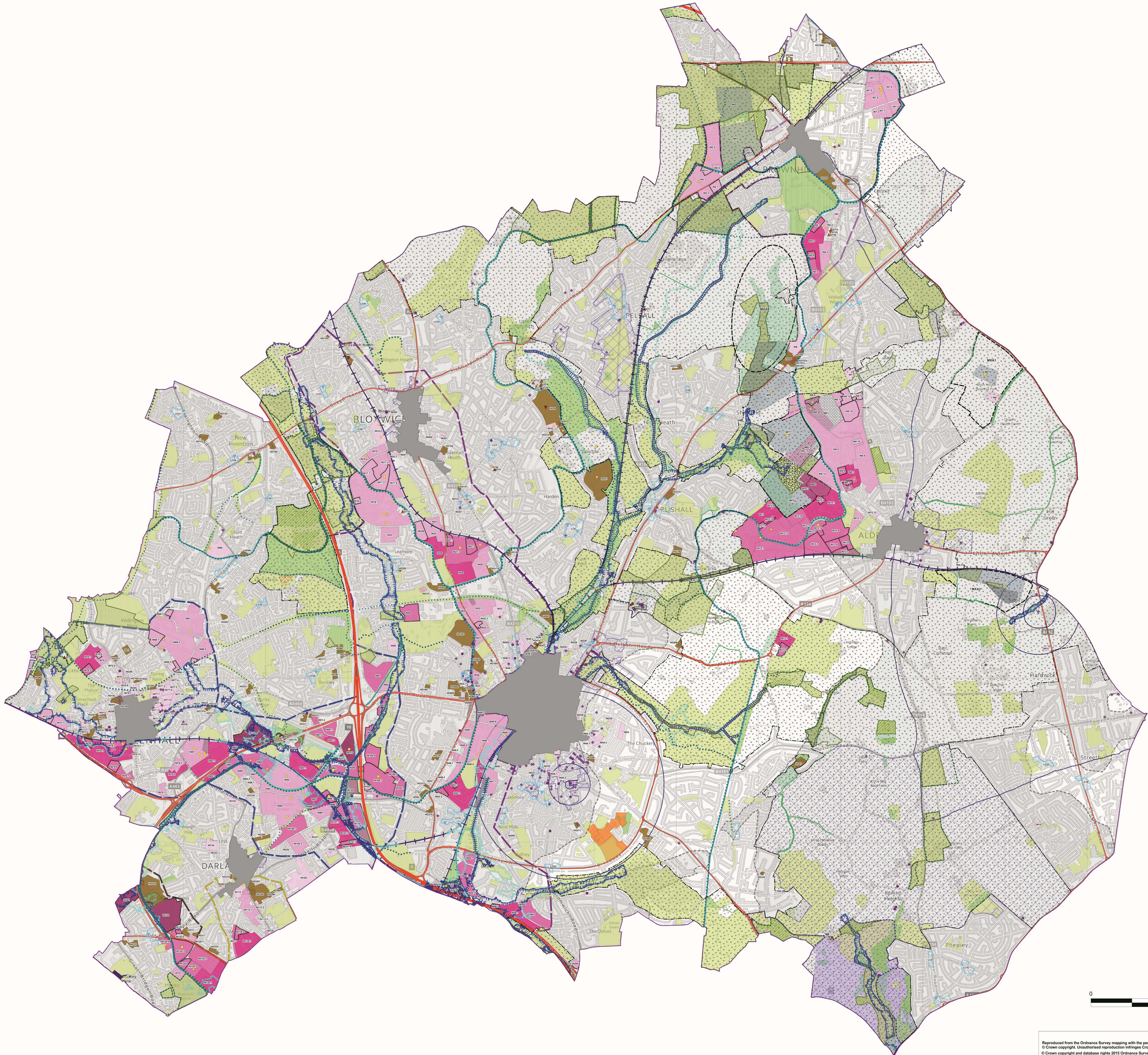


**Draft Policies Map**  
**SAD Preferred Options**  
**Consultation**

7th September - 2nd November 2015



**KEY**

- Town and District Centres
- Borough Boundary
- BCCS Regeneration Corridors**
- 5 Loxdale - Moxley
- 6 Wednesfield - Willenhall - Darlaston
- 7 Bloxwich - Birchills - Bescot
- 8 Hill Top
- 15 Brownhills
- Homes for Our Communities**
- (a) General Housing**
- Land Allocated for New Housing Development - HC1
- (b) Accommodation for Gypsies, Travellers and Travelling Showpeople**
- Existing Traveller Sites to be Safeguarded - HC4
- Existing Showpeople Sites to be Safeguarded - HC4
- Existing Temporary or Personal Traveller Sites to be Made Permanent - HC4
- New Showpeople Sites - HC4
- New Traveller Sites and Existing Sites to be Expanded - HC4
- New Traveller or Showpeople Sites - HC4
- Providing for Industrial Jobs and Prosperity**
- Existing High Quality Industry - IND1
- Potential High Quality Industry - IND2
- Retained Local Quality Industry - IND3
- Local Industry Consider for Release - IND4
- New Employment Opportunities - IND5
- Employment Sites Vacant at March 2015
- Strengthening Our Local Centres**
- Local Centres - SLC1
- Local Centres Development Opportunities - SLC2
- Open Space, Leisure and Community Facilities**
- Open Space - OS1
- University of Wolverhampton Campus - UW1
- Cemetery Extension - UDP Saved Policy LC11
- Greenways (Complete, Protected) - UDP Saved Policy LC5
- Greenways (Proposed) - UDP Saved Policy LC5
- Environmental Network**
- Green Belt - GB1
- Nature Conservation**
- Special Area of Conservation (SAC) - EN1
- Site of Special Scientific Interest (SSSI) - EN1
- Local Nature Reserves (LNR) - EN1
- Site of Importance for Nature Conservation (SINC) - EN1
- Site of Local Importance for Nature Conservation (SLINC) - Linear - EN1
- Site of Local Importance for Nature Conservation (SLINC) - EN1
- Ancient Woodland - EN2
- Water Environment**
- Flood Zone 2 - ENS
- Flood Zone 3 - ENS
- Source Protection Zones - UDP Saved Policy EN40
- Canals - EN4
- Historic Environment**
- Conservation Area - ENS
- Listed Buildings
- Locally Listed Buildings
- Scheduled Monuments
- Registered Parks and Gardens
- Great Barr Hall and Estate and St Margaret's Hospital - EN7
- Highgate Brewery - EN8
- Sustainable Waste Management**
- Strategic Waste Sites - W1, W2
- Other Existing Waste Sites - W1, W2
- Potential Waste Sites - W1, W3, W4
- Sustainable Use of Minerals**
- Minerals Safeguarding Area - M1
- Mineral Infrastructure Sites - M2, M3
- Brick Works - M7, M8, M9
- Permitted Minerals Sites - M4, M6, M9
- Minerals Areas of Search - M5, M8
- Potential New Minerals Sites - M8
- Strategic Transport Network**
- Strategic Highways Network: Motorways - UDP Saved Policies T4(a), T5
- Strategic Highways Network: Major Roads - UDP Saved Policies T4(a), T5
- Strategic Rail Network - UDP Saved Policy T3
- Bradley Lane Metro Park and Ride - UDP Saved Policy T3

