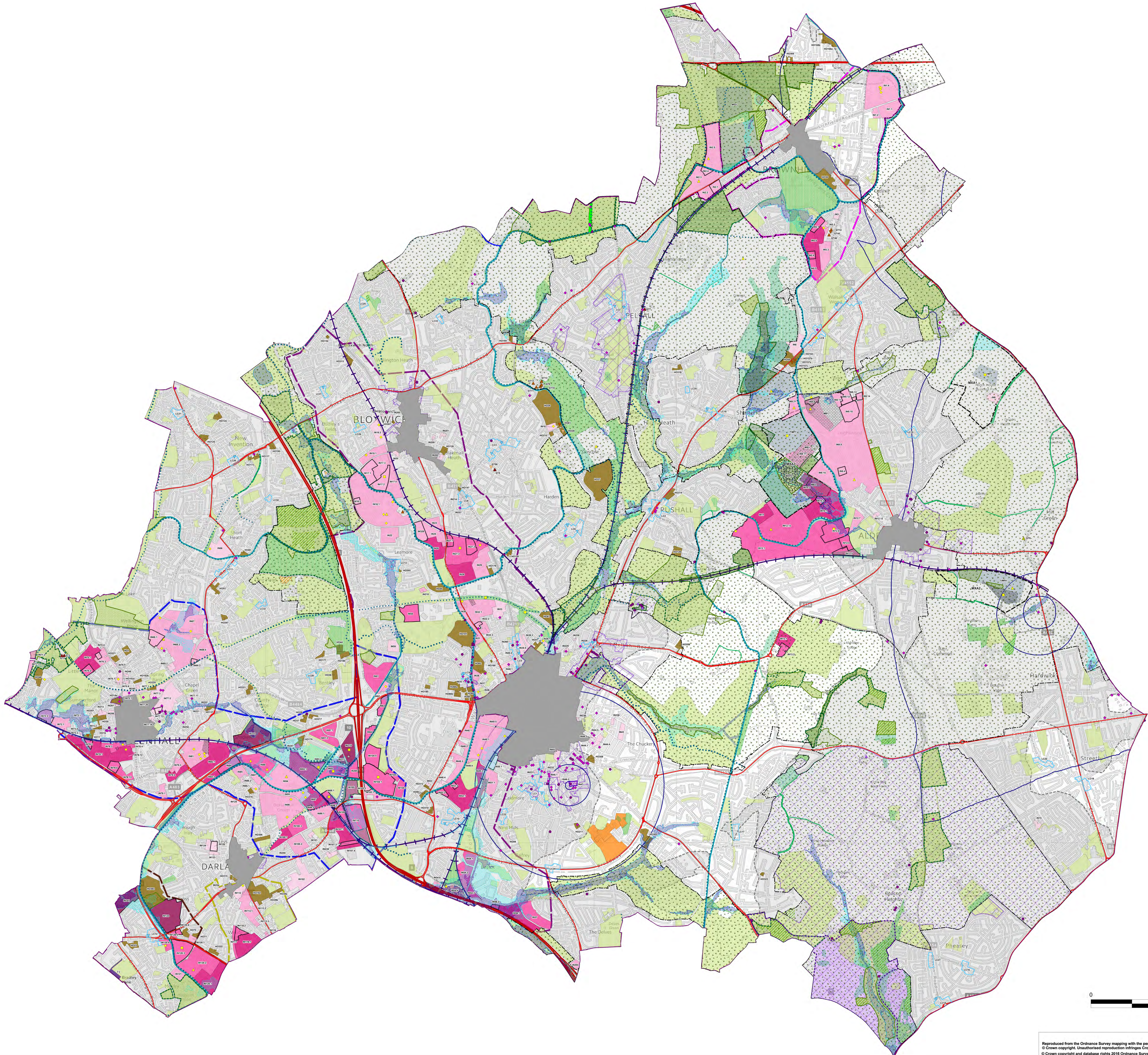


**SAD Draft Policies Map**

Publication Version  
for Consultation

7th March - 3rd May 2016



- KEY**
- Town and District Centres
  - Borough Boundary
  - BCCS Regeneration Corridors**
    - 5 Loxdale - Moxley
    - 6 Wednesfield - Willenhall - Darlaston
    - 7 Blomwich - Birchills - Bescot
    - 8 Hill Top
    - 15 Brownhills
  - Homes for Our Communities**
    - (a) General Housing
      - Land Allocated for New Housing Development - HC1
    - (b) Accommodation for Gypsies, Travellers and Travelling Showpeople
      - Existing Traveller Sites to be Safeguarded - HC4
      - Existing Showpeople Sites to be Safeguarded - HC4
      - Existing Temporary or Personal Traveller Sites to be Made Permanent - HC4
      - New Showpeople Sites - HC4
      - New Traveller Sites and Existing Sites to be Expanded - HC4
      - New Traveller or Showpeople Sites - HC4
  - Providing for Industrial Jobs and Prosperity**
    - Existing High Quality Industry - IND1
    - Potential High Quality Industry - IND2
    - Retained Local Quality Industry - IND3
    - Local Industry Considered for Release - IND4
    - New Employment Opportunities - IND5
    - Employment Sites Vacant at January 2016
  - Strengthening Our Local Centres**
    - Local Centres - SLC1
    - Local Centres Development Opportunities - SLC2
  - Open Space, Leisure and Community Facilities**
    - Open Space - OS1
    - University of Wolverhampton Campus - UW1
    - Cemetery Extension - UDP Saved Policy LC11
    - Greenways (Complete, Protected) - UDP Saved Policy LC5
    - Greenways (Proposed) - UDP Saved Policy LC5
  - Environmental Network**
    - Green Belt - GB1
    - Nature Conservation**
      - Special Area of Conservation (SAC) - EN1
      - Site of Special Scientific Interest (SSSI) - EN1
      - Local Nature Reserves (LNR) - EN1
      - Site of Importance for Nature Conservation (SINC) - EN1
      - Site of Local Importance for Nature Conservation (SLINC) - Linear - EN1
      - Site of Local Importance for Nature Conservation (SLINC) - EN1
      - Ancient Woodland - EN2
  - Water Environment**
    - Flood Zone 2 - EN3
    - Flood Zone 3 - EN3
    - Source Protection Zones - UDP Saved Policy ENV40
    - Canals - EN4
    - Indicative Route of Hatherton Branch Canal Restoration - EN4
  - Historic Environment**
    - Conservation Area - EN5
    - Listed Buildings
    - Locally Listed Buildings
    - Scheduled Monuments
    - Registered Parks and Gardens
    - Great Barr Hall and Estate and St Margaret's Hospital - EN7
    - Higgate Brewery - EN8
  - Sustainable Waste Management**
    - Strategic Waste Sites - W1, W2
    - Other Existing Waste Sites - W1, W2
    - Potential Waste Sites - W1, W3, W4
  - Sustainable Use of Minerals**
    - Minerals Safeguarding Area - M1
    - Mineral Infrastructure Sites - M2, M3
    - Brick Works - M6
    - Permitted Minerals Sites - M4, M5, M7, M8, M9
    - Minerals Areas of Search - M4, M5, M7
    - Potential New Minerals Sites - M7
  - Strategic Transport Network**
    - Strategic Highways Network: Motorways - UDP Saved Policies T4(a), T5
    - A5 - UDP Saved Policies T4(a), T5
    - Key Road Network (Draft) - UDP Saved Policies T4(a), T5
    - Strategic Rail Network - UDP Saved Policy T3
    - Bradley Lane Metro Park and Ride - UDP Saved Policy T3

