




# Potentially Contaminated Land and Landfill Constraints

-  AAP Boundary
-  Historic landfill site with a lower likelihood of issues
-  Land where contamination may need to be addressed during redevelopment

 Not to Scale.  
N

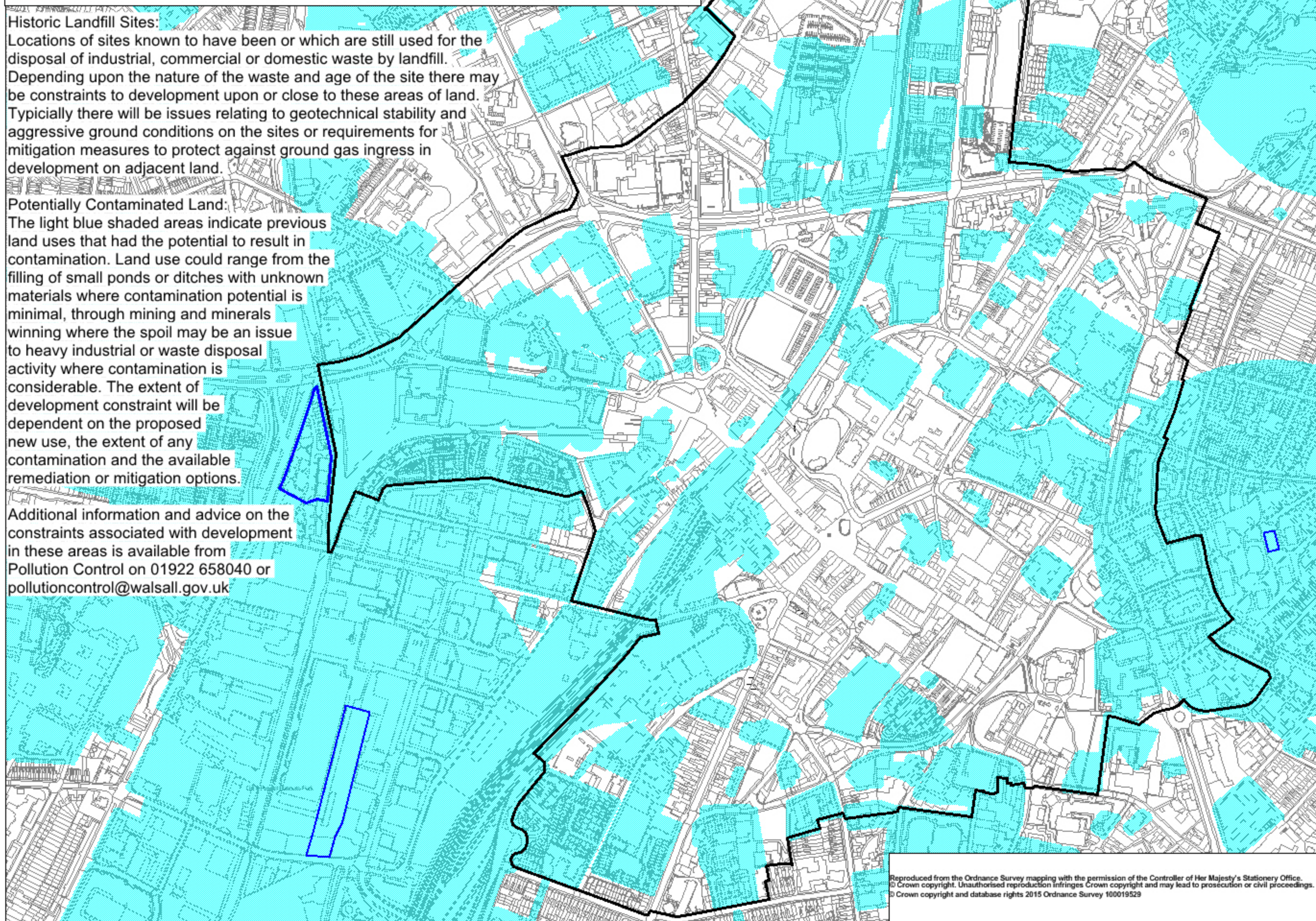
## Historic Landfill Sites:

Locations of sites known to have been or which are still used for the disposal of industrial, commercial or domestic waste by landfill. Depending upon the nature of the waste and age of the site there may be constraints to development upon or close to these areas of land. Typically there will be issues relating to geotechnical stability and aggressive ground conditions on the sites or requirements for mitigation measures to protect against ground gas ingress in development on adjacent land.

## Potentially Contaminated Land:

The light blue shaded areas indicate previous land uses that had the potential to result in contamination. Land use could range from the filling of small ponds or ditches with unknown materials where contamination potential is minimal, through mining and minerals winning where the spoil may be an issue to heavy industrial or waste disposal activity where contamination is considerable. The extent of development constraint will be dependent on the proposed new use, the extent of any contamination and the available remediation or mitigation options.

Additional information and advice on the constraints associated with development in these areas is available from Pollution Control on 01922 658040 or [pollutioncontrol@walsall.gov.uk](mailto:pollutioncontrol@walsall.gov.uk)



Reproduced from the Ordnance Survey mapping with the permission of the Controller of Her Majesty's Stationery Office.  
© Crown copyright. Unauthorised reproduction infringes Crown copyright and may lead to prosecution or civil proceedings.  
© Crown copyright and database rights 2015 Ordnance Survey 100019529