

THI UPDATE

Willenhall Townscape Heritage Initiative

Welcome to the second issue of the Willenhall THI Update, the newsletter designed to inform and keep you up to date with what is happening in the regeneration scheme.

Grants for your building

The Willenhall Townscape Heritage Initiative (THI) grant scheme has been established to help with the cost of repairing, restoring and reusing historic buildings in Willenhall town centre.

The scheme is being funded by Heritage Lottery Fund and VIEW (Visionary Investment Enhancing Walsall) and administered by Walsall Council.

The THI can fund repairs to the exterior such as repairs to roofs, windows, brickwork, and shopfronts. Where original details have been removed the grant can fund their

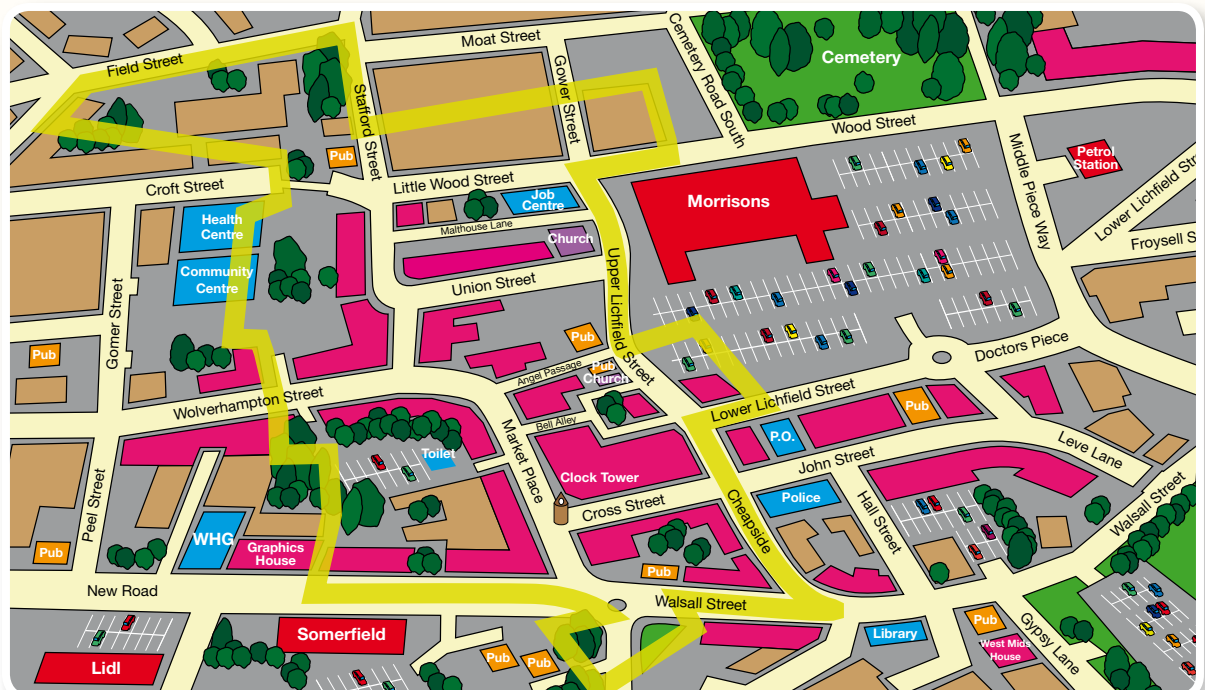
reinstatement such as traditional shopfronts and timber sash windows. The grant can also pay towards bringing vacant floorspace back into use for example vacant floors above shops.

Due to the high level of demand for the grant we are not currently developing any new schemes but please still contact the Project Officer if you would like to register your interest in a grant.

For more information, or to register your interest, please contact Mandy Hall on 01922 654757 or email THIprojectmanager@walsall.gov.uk

Willenhall Townscape Heritage Initiative (THI) Area

Designated by the green line



Walsall Council



Heritage
LOTTERY FUNDED



view
visionary investment enhancing walsall

Project Progress

Repair and restoration works have been undertaken at three properties as part of the Willenhall THI scheme.



Blunts Shoes at 30 Market Place has had historic features reinstated such as its chimney and also had repairs carried out to its 19th century frontage including the shopfront. J R Holyhead at 32 Cross Street and RS News at 57 Wolverhampton Street have both had new shopfronts installed based on a traditional design as well as undertaking general repairs. At RS News, sections from the original windows were uncovered when the Upvc windows were removed, these historic details have informed the design of the new windows. Works to all three properties have been carried out using traditional materials and techniques.

Several other projects are due to start on site shortly and details of these will be contained in future issues of the newsletter. But in the mean time look out for the Willenhall THI banner!

Willenhall Heritage Trail

The THI has helped fund an exciting new heritage trail using cast iron plaques to guide people through the town centre and on to the Memorial Park. Local artists Planet Art have worked with the Council to develop the project.

Planet Art carried out workshops with local pupils from Pool Hayes Arts and Community College, St Giles Primary School and Fibbersley Park Primary School to research the history of Willenhall and develop ideas for the design of the plaques. These ideas were then taken to a wider audience through community events

including an exhibition at Willenhall Library and stalls at Willenhall Market

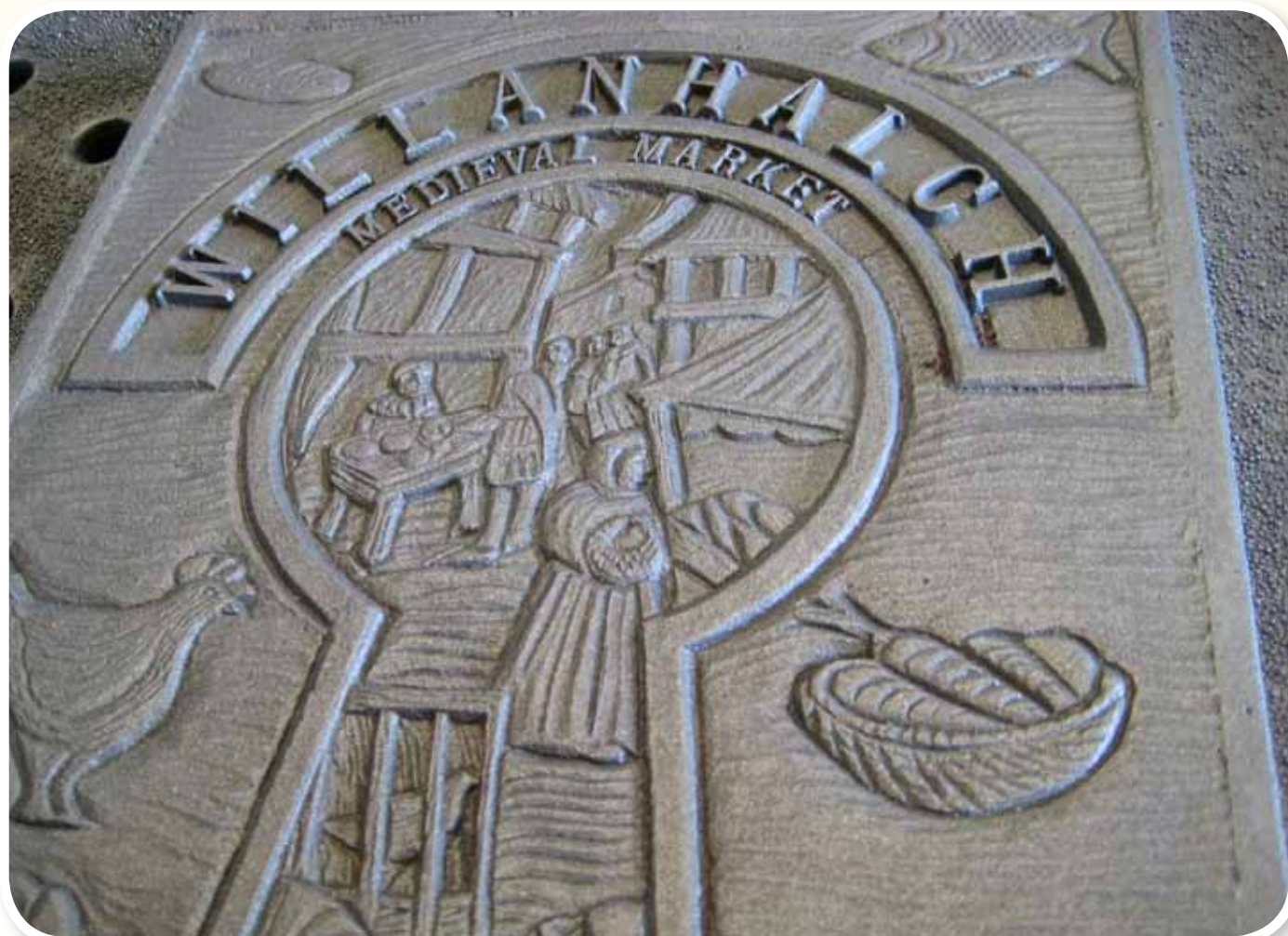
The trail uses cast iron plaques to highlight important historic buildings, people or events. There are 12 large plaques and 25 smaller plaques in important locations around the town, which have been designed to reflect different aspects of Willenhall's heritage. The plaques have been cast at the local Purbright Foundry

The trail stretches from Willenhall Memorial Park and Fibbersley Nature Reserve to the east of the town centre to some of the more industrial sites in the west, and the trail can be started anywhere along the route.



For further information about the trail please visit www.willenhallhistory.co.uk/trail

The project has been funded by the Willenhall THI scheme, developer contributions and the Council's Greenspace Service.



Maintenance *Top Tips*

Regular inspection and maintenance can help prevent the need for expensive repair later on. Each issue of the newsletter will look at a different cause of building decay.

This issue will look at: **Roofs**

Roofing problems can be prevented with regular inspections and routine maintenance. Loose or missing slates and tiles may mean that water is getting onto roof timbers which are expensive to repair

What to look for:

- Missing slates or tiles
- Moss growth and or vegetation

- Missing mortar from ridge and hip tiles
- Holes, splits and other defects in flashing valleys or flat roofs

What to do:

- Have missing tiles or slates reinstated before damage occurs to roof timbers or plaster ceilings.
- Moss can harbour damp, cause slates to deteriorate and block gutters. Careful removal is advisable.
- Re-use existing sound slates. Any replacement slates should be of matching colour, size and thickness.
- Failed flashings can produce signs of dampness on internal walls. Employ a specialist to carry out repairs

Help for your business

Find local suppliers and business opportunities with finditinwalsall

How much of your supply chain comes from within a 5-mile radius?

www.finditinwalsall.co.uk is Walsall Council's business to business procurement portal designed to help local businesses source goods and services from their locality.

Businesses can use it to find local suppliers – keeping your spending in the local economy and supporting local jobs, as well as taking traffic off the roads and reducing carbon emissions.

Businesses can use it to advertise their own purchasing needs – relevant

suppliers will be notified automatically by email, saving the hassle of researching companies that may be able to provide the goods and services they're after.

In return, businesses can also respond to those opportunities to supply goods or services, winning themselves contracts.

It's also a valuable source of information regarding business news and events, such as Meet the Buyer events with major companies. It's completely free to use and only takes a few minutes to register.

For further information please contact Daniel Carins at Walsall Council 01922 654751

For further details about the Willenhall THI grant scheme

Mandy Hall, Regeneration Officer, Delivery and Development, Regeneration, Walsall Council, 2nd Floor, Civic Centre, Darwall Street, Walsall, WS1 1DG

Telephone: 01922 654757

Email: THIprojectmanager@walsall.gov.uk



Walsall Council

